

Finding A Research Lab

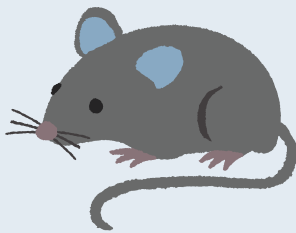
GUIDING QUESTIONS



Determining Research Type

Is there a specific research field you would like to gain experience in?

Is there a specific subject or question you would like to investigate?



Determining Lab Type

Would you like to work with humans, rats, mice, fruit flies, zebrafish, etc?

Would you like to work in a wet lab or a lab that deals more in questionnaires and psychological assessments?



Setting Your Requirements and Expectations

How many hours are you expecting to work per week?

What kind of responsibilities do you want to have in the lab?

Are you joining a lab just to get experience, or do you genuinely want to learn the skills?
